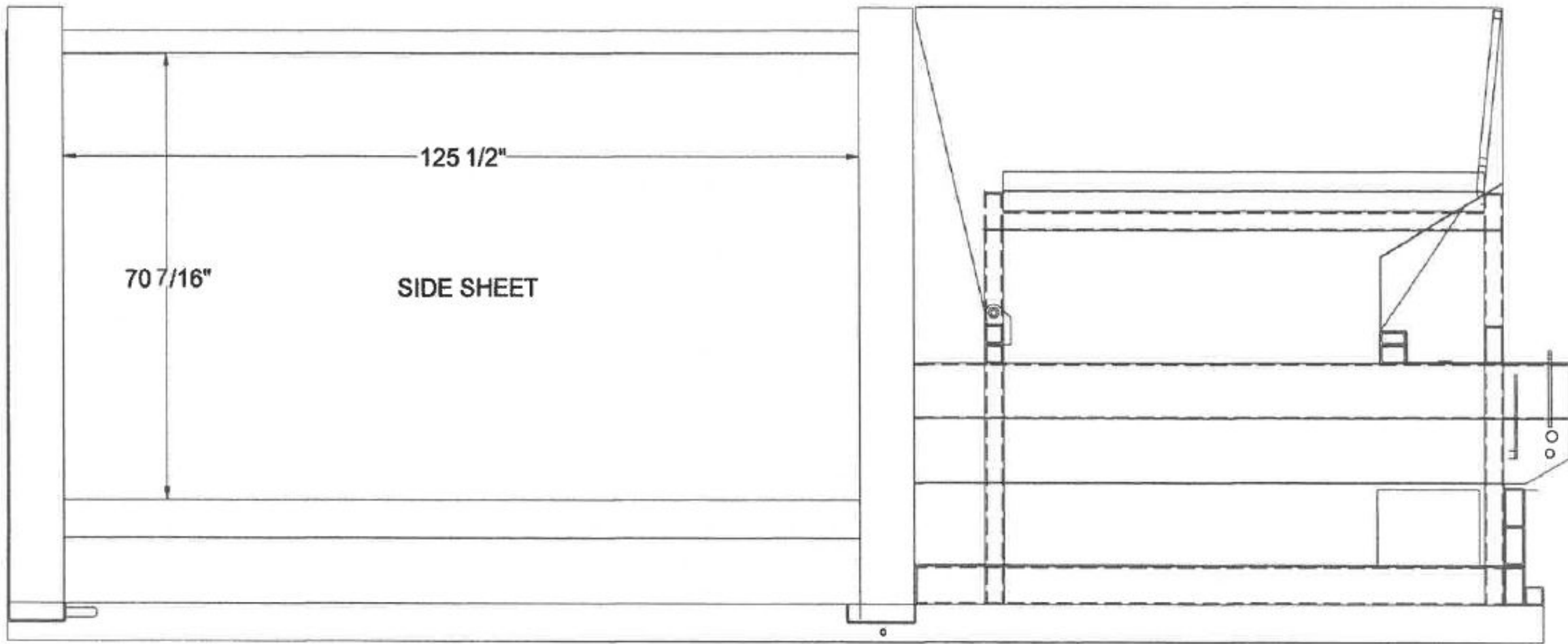
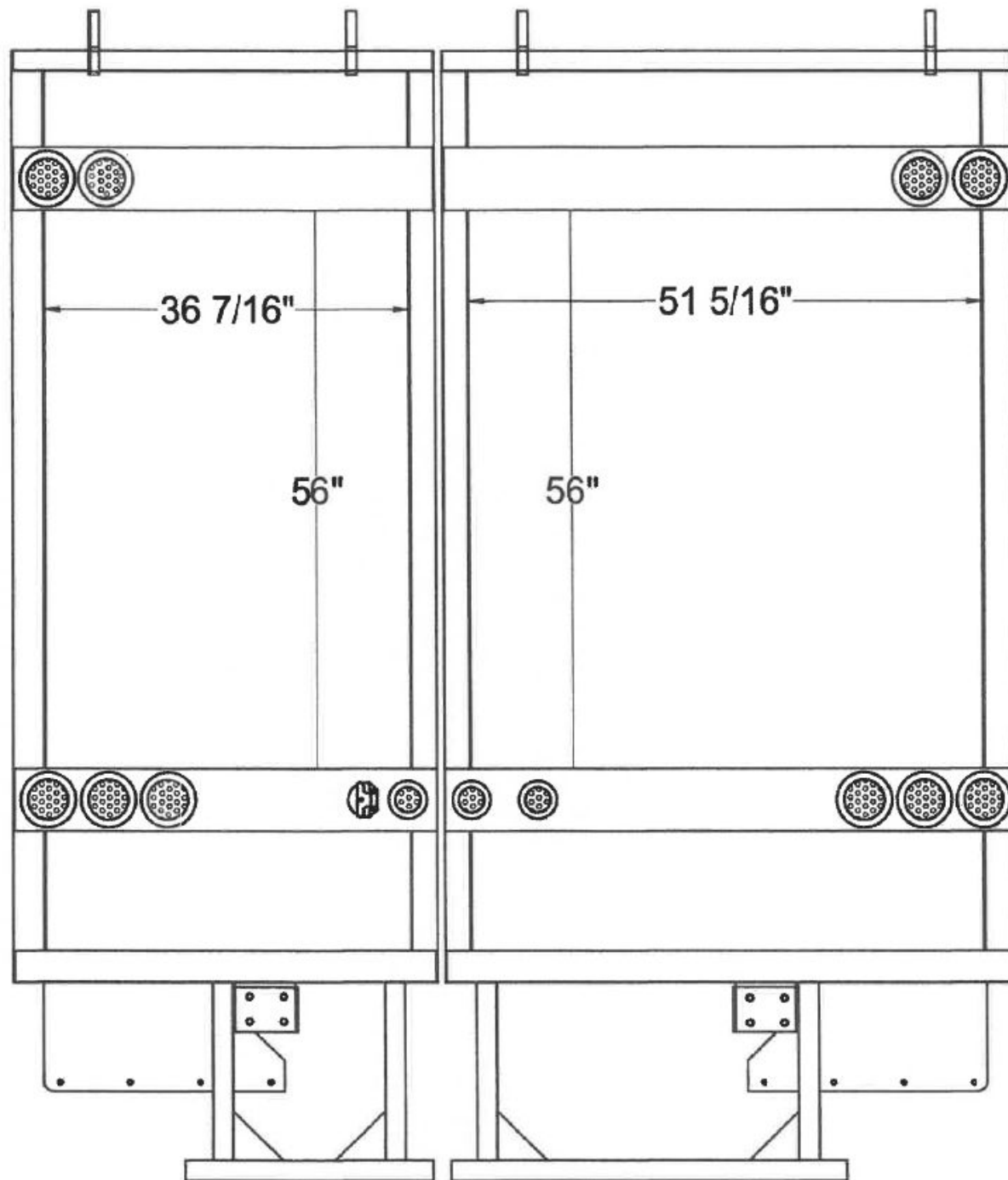


2018 Freightliner M2112 w/G-S Products Packer Body

- DD13 Engine
- Allison Automatic
- Dual Sit Down Drive Modification
- CS-SB-9232 32 YD Collectstar Automated Split Body
- 8200 Spilt-Body Side Loader 40/60 Split
- True 12 Foot Arm Reach
- Vin# 1FVHC5DV2JHJK5845
- Placed in Service may 19th, 2017
- Mileage 178,937
- Hours 16,385











RECYCLING IS
EVERYBODY'S JOB

SYRACUSE HAULERS

GSI Products

DANGER
DO NOT ENTER AREA
UNLESS YOU ARE A
POWER WIRE AND CABLE
AND CERTAIN RISK REMOVAL







